

ICBVS24

FEATURES

Chamber vacuum seal liquids and fragile foods

Pair with Wolf ovens or steamer module for easy meal prep

Stainless, black glass, or custom panel options in 60 cm or 76 cm widths

Seal wine and other rigid containers with included accessory

Exceptional support from our Customer Care team

Rigorously tested in our U.S. manufacturing facilities for decades of use

ACCESSORIES

60 cm Stainless Front Panel

60 cm Black Glass Front Panel

76 cm Stainless Front Panel

76 cm Black Glass Front Panel

Integrated Front Panel

Large Bags – 24 x 34 cm

Small Bags – 18 x 27 cm

Wine Stoppers (3)

Accessories available through an authorized dealer.

For local dealer information, visit subzerowolf.com.hk



FRONT PANEL OPTIONS



60 CM DRAWER FRONT STAINLESS PANEL



76 CM DRAWER FRONT STAINLESS PANEL



60 CM DRAWER FRONT BLACK GLASS



76 CM DRAWER FRONT BLACK GLASS



CUSTOM PANEL
Integrated Front Panel Kit Required

PRODUCT SPECIFICATIONS

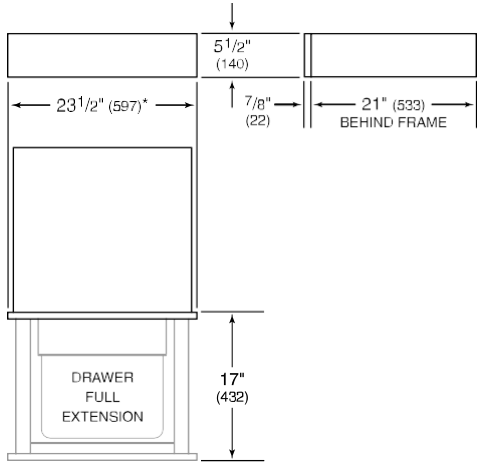
Model	ICBVS24
Dimensions	597 mm W x 140 mm H x 533 mm D
Capacity	7 L
Shipping Weight	34 kg
Electrical Supply	220-240 VAC, 50/60 Hz
Electrical Service	0.32 kW
Power Cord	0.9 m

ELECTRICAL



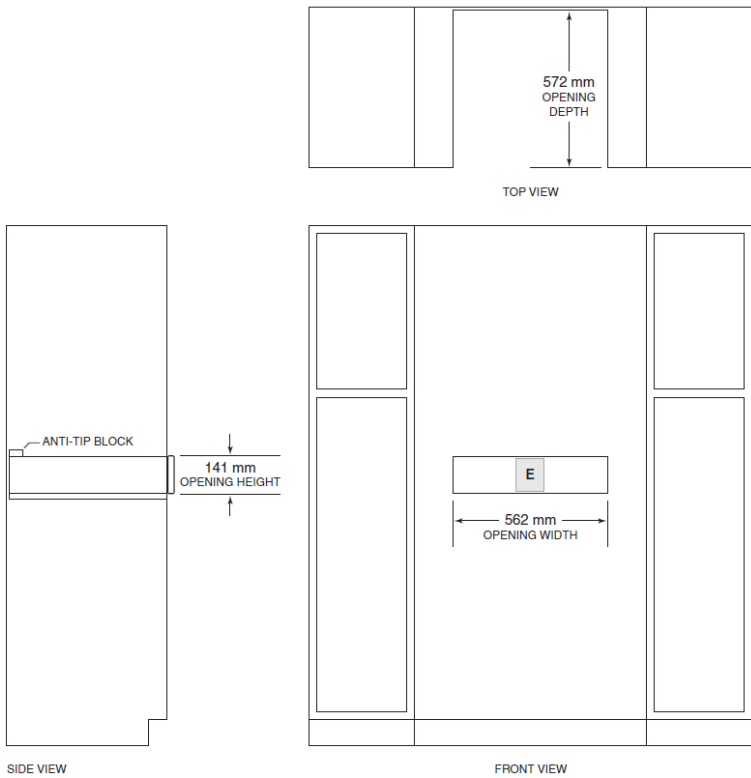
NOTE: Dimensions in parenthesis are in millimeters unless otherwise specified

DIMENSIONS

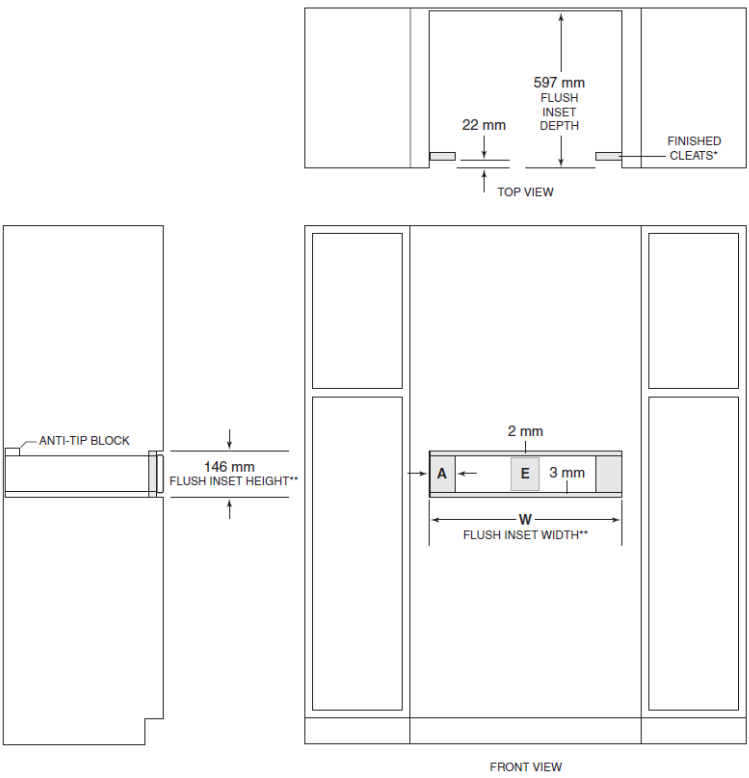


*29 7/8" (759) width for 30" panel.

STANDARD INSTALLATION



FLUSH INSTALLATION



FLUSH INSET WIDTH	W	A
600 mm Opening	603 mm	21 mm
762 mm Opening	765 mm	102 mm

*Will be visible and should be finished to match cabinetry
**765 mm width and 102 mm cleat dimension for 76 cm panel.
NOTE: Flush inset width and height dimensions provide minimum reveals