

ICBSO2450TE/S/T



FEATURES

The elegant, modern aesthetics pair perfectly with 60 cm Wolf cooking products as well as a full suite of similarly styled Sub-Zero and Wolf appliances.

Full-color touchscreen simplifies use.

Save up to 50 personalized favorite recipe presets.

Cooking modes include Convection, Convection Humid, Convection Bake, Bake, Bake Humid, Slow Cook, Broil, Convection Broil, Slow Roast, Warm, Gourmet, and Gourmet+. Also includes Clean Mode with Light, Medium, and Heavy soil settings.

1750-Watt recessed broil element.

Inside, three full-extension rack positions and one standard position allow easy access and increased cooking flexibility.

New controls offer language translations for: English, Spanish, French, Italian, German, Dutch and Chinese.

The temperature probe alerts you when your dish has reached the desired temperature.

ACCESSORIES

Broiler Rack

Porcelain Steam Enameled Broil Pan

Pro Handle

Solid Pan - 324 x 38 x 178 mm

Solid Pan - 451 x 32 x 381 mm

Standard Oven Rack

Temperature Probe

Accessories available through an authorized dealer.
For local dealer information, visit subzero-wolf.com/hk

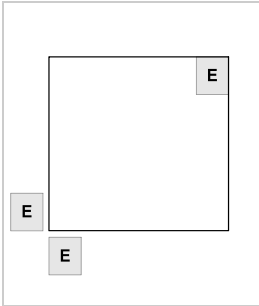




PRODUCT SPECIFICATIONS

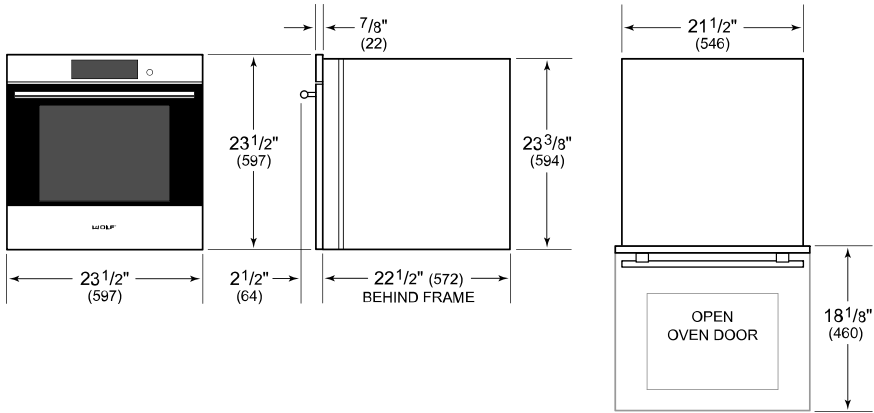
Model	ICBSO2450TE/S/T
Dimensions	597 mm W x 597 mm H x 572 mm D
Oven Interior Dimensions	457 mm W x 393 mm H x 384 mm D
Overall Capacity	68 L
Door Clearance	460 mm
Shipping Weight	51 kg
Electrical Supply	220/240 VAC; 50 Hz
Electrical Service	3.3 kW
Conduit Length	1.2 m

ELECTRICAL

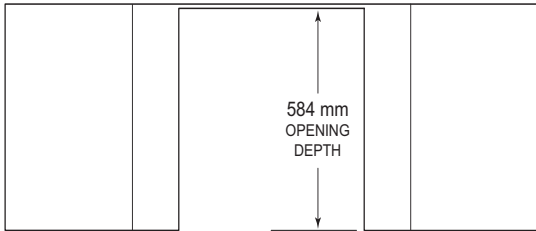


NOTE: Dimensions in parenthesis are in millimeters unless otherwise specified

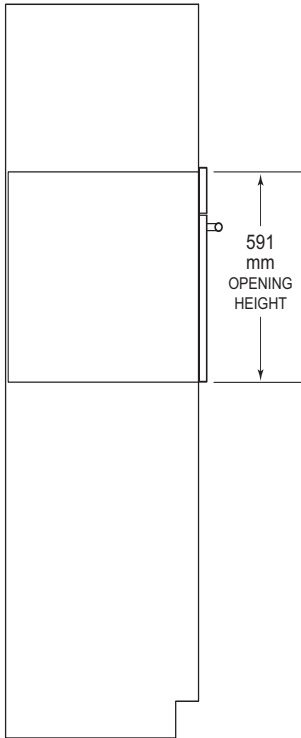
DIMENSIONS



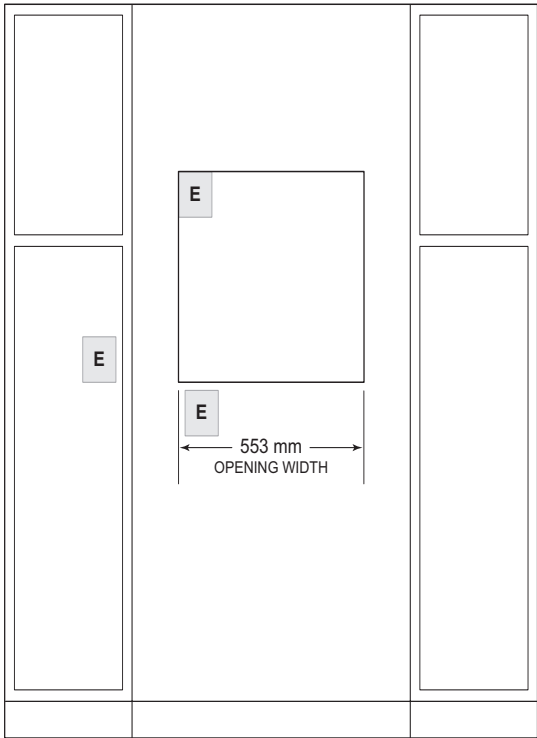
STANDARD INSTALLATION



TOP VIEW



SIDE VIEW



FRONT VIEW

NOTE: Location of electrical supply within opening may require additional cabinet depth.