

ICBDEU2450R



FEATURES

Fully customizable exterior, accepting custom panels for an integrated look within cabinetry or stainless steel accessory panels and handles to coordinate with other Sub-Zero and Wolf appliances

Seamlessly integrating anywhere, undercounter refrigeration adds comfort to your master suite, creates a corner for libations in the study, provides subtle storage for delicate cosmetics—the options are endless

Flexible storage options with one stationary and two adjustable shelves

Two on-door shelves easily accommodate a wide variety of condiments and beverages, with ample room for larger two-liter bottles

Intuitive, on-door touch control panel offers ergonomic, convenient access to settings

Cleanup is simple with nano-coated, spill-proof shelves

Clear storage drawer provides quick access to essential items

Offers precise temperature control within one degree of setpoint, preserving dairy, produce, craft beer, and other perishables at their optimal temperature

Soft-on LED lighting fully illuminates the interior when the door is open

ACCESSORIES

Dual Installation Kit - Handle-to-Drawer

Dual Installation Kit - Handle-to-Handle

Custom Panel Lock Kit

Stainless Steel Pro Handles

Stainless Steel Tubular Handles

Stainless Steel Dual Kickplate - 1219 mm

Stainless Steel Door Panels With Pro Handle

Stainless Steel Door Panels With Tubular Handle

Accessories are available through an authorized dealer.
For local dealer information, visit subzero-wolf.com/hk



HANDLE ACCESSORIES

PRO



TUBULAR



PRODUCT DETAILS

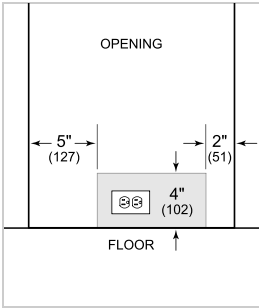
REFRIGERATOR

- One stationary and two adjustable shelves
- Two on-door shelves
- Clear storage drawer

PRODUCT SPECIFICATIONS

Model	ICBDEU2450R
Dimensions	610 mm W x 876 mm H x 587 mm D
Refrigerator Capacity	152 L
Shipping Weight	60 kg
Electrical Supply	220-240 VAC, 50/60 Hz
Electrical Service	0.7 A
Electrical Cord	2 m

ELECTRICAL

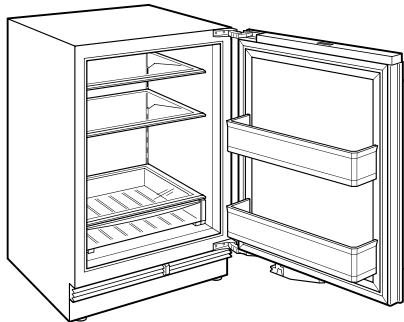


NOTE: The electrical outlet must be positioned with the grounding prong to the right of the thinner blades.

PANEL SPECIFICATIONS For complete panels specifications including width/height, weight requirements and thickness requirements visit subzero-wolf.com/hk

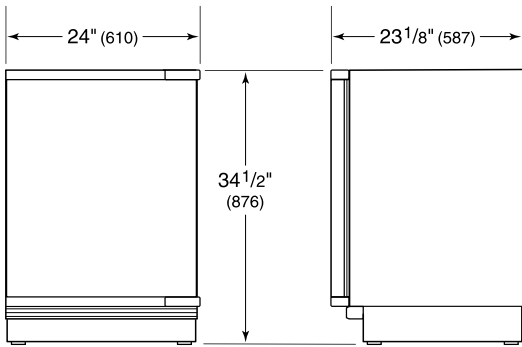
NOTE: Dimensions in parenthesis are in millimeters unless otherwise specified

INTERIOR VIEW

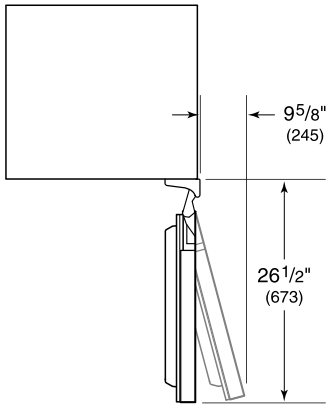


This illustration is intended for interior reference only and may not represent the exterior of the model being specified.

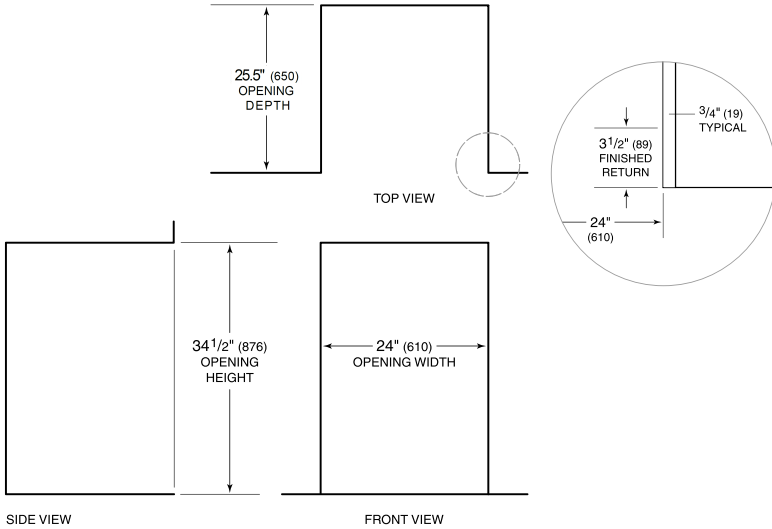
DIMENSIONS



HEIGHT DIMENSIONS $\pm 1/2"$ (13)



STANDARD INSTALLATION



NOTE: 3 1/2" (89) finished returns will be visible and should be finished to match cabinetry. Requires extra 40mm depth for power socket and water connection.