

76 CM M SERIES CONTEMPORARY STAINLESS STEEL HANDLELESS CONVECTION STEAM OVEN - FLUSH INSTALLATION



ICBCSO3050CM/S

FEATURES

The elegant, modern aesthetics pair perfectly with a full suite of similarly styled Sub-Zero and Wolf appliances

Contemporary styling features a completely handleless look that incorporates a motorized door system

Full-color touchscreen simplifies use

Save up to 50 personalized favorite recipe presets

Cooking modes include Steam, Convection, Broil, Slow Roast

1750-Watt recessed broil element

68 Liter oven cavity allows multiple dishes to be placed side by side at once

1889-Watt dual convection system ensures even, multi-rack baking and consistent results

Three full-extension rack positions and one standard position allow easy access and increased cooking flexibility

1.2 Liter tank holds enough water for 2-hours of uninterrupted steam cooking

The temperature probe alerts you when your dish has reached the desired temperature

ACCESSORIES

Broiler Rack

Descaling Solution

Enameled Broil Pan

Perforated Pan - 324 x 38 x 178 mm

Perforated Pan - 629 x 35 x 368 mm

Solid Pan - 324 x 38 x 178 mm

Solid Pan - 629 x 35 x 368 mm

Standard Oven Rack

Temperature Probe

Accessories available through an authorized dealer.

For local dealer information, visit subzero-wolf.com/hk.



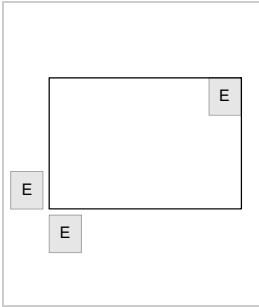
76 CM M SERIES CONTEMPORARY STAINLESS STEEL HANDLELESS
CONVECTION STEAM OVEN - FLUSH INSTALLATION



PRODUCT SPECIFICATIONS

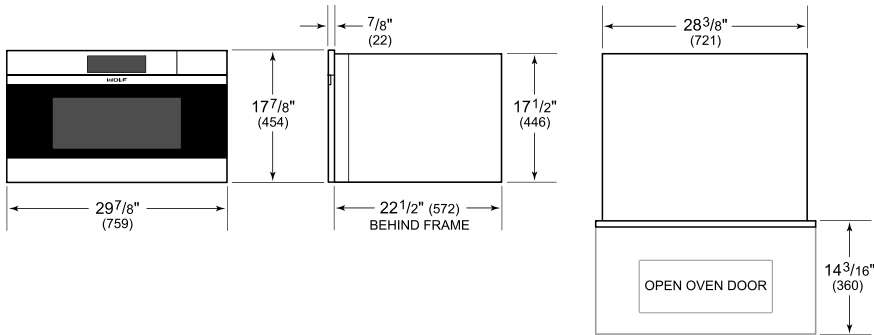
Model	ICBCSO3050CM/S
Dimensions	759 mm W x 454 mm H x 572 mm D
Interior Dimensions	641 mm W x 273 mm H x 384 mm D
Overall Capacity	68 L
Usable Capacity	51 L
Door Clearance	360 mm
Weight	57 kg
Electrical Supply	220-240 VAC; 50 Hz
Electrical Service	3.7 kW
Power Cord	1.2 m

ELECTRICAL

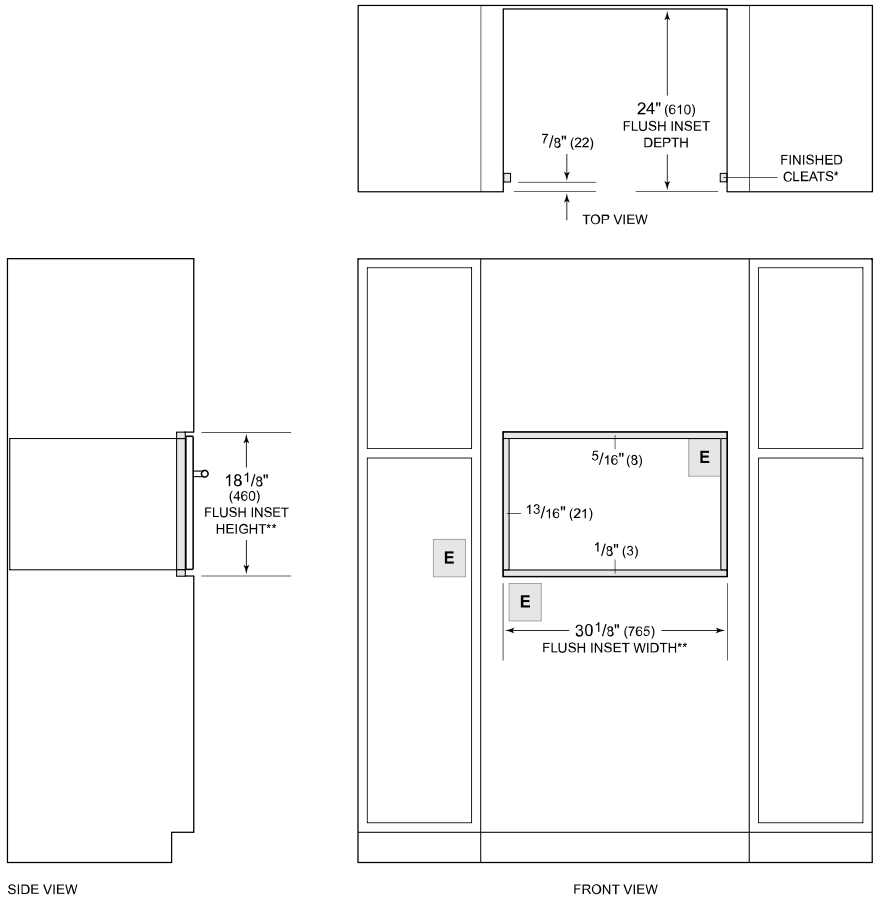


NOTE: Dimensions in parenthesis are in millimeters unless otherwise specified

DIMENSIONS



FLUSH INSTALLATION



**Will be visible and should be finished to match cabinetry.*
***Dimension provides minimum reveals.*
NOTE: Location of electrical supply within opening may require additional cabinet depth.