

ICBSO30CM/S



## FEATURES

Advanced Dual VertiCross convection system for faster preheats and consistent cooking across all racks

Gourmet feature has menu of presets that automatically controls cooking of popular meals

Interactive color touchscreen for advanced cooking control

Enhanced interior views with triple-pane glass and three halogen lights

Quiet-close doors with spring-and-damper door hinge system

Can be installed flush with surrounding cabinetry for integrated look

145 L capacity to handle multiple dishes at once

10 cooking modes for predictably delicious results  
(Convection, Roast, Bake, Grill, Convection Roast, Stone, Gourmet, Warm, Proof and Dehydrate)

Rigorously tested in our U.S. manufacturing facilities for decades of use

Exceptional support from our Customer Care team

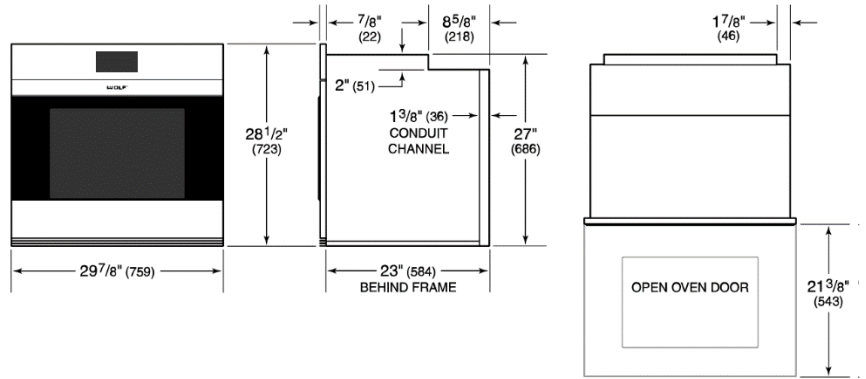
Accessories available through an authorized Sub-Zero dealer.  
For local dealer information, visit [subzerowolf.com.hk](http://subzerowolf.com.hk).



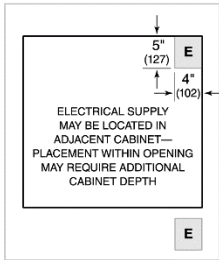
**PRODUCT SPECIFICATIONS**

Model	ICBSO30CM/S
Dimensions	759 mm W x 724 mm H x 584 mm D
Interior Dimensions	641 mm W x 448mm H x 506 mm D
Overall Capacity	145 L
Door Clearance	543 mm
Weight	124 kg
Electrical Supply	220-240 VAC; 50/60 Hz
Electrical Service	4.2-4.8 kW

**DIMENSIONS**

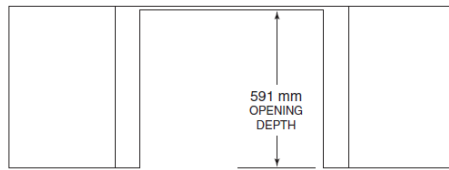


**ELECTRICAL**

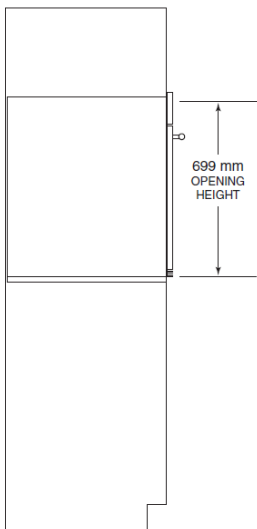


NOTE: Dimensions in parenthesis are in millimeters unless otherwise specified

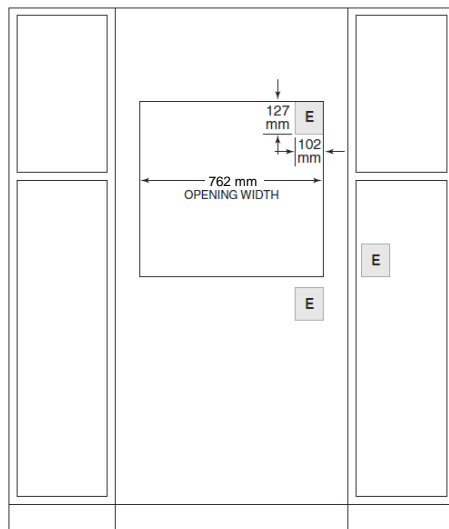
**STANDARD INSTALLATION**



TOP VIEW

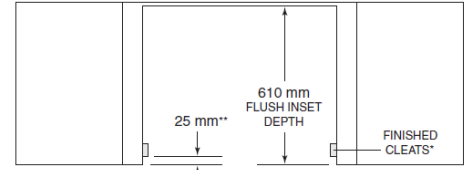


SIDE VIEW

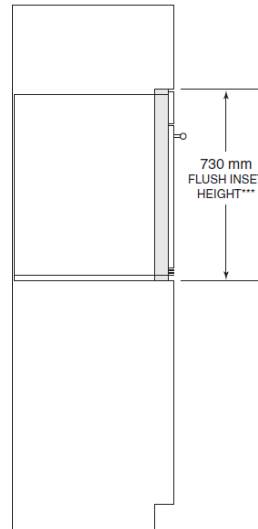


FRONT VIEW

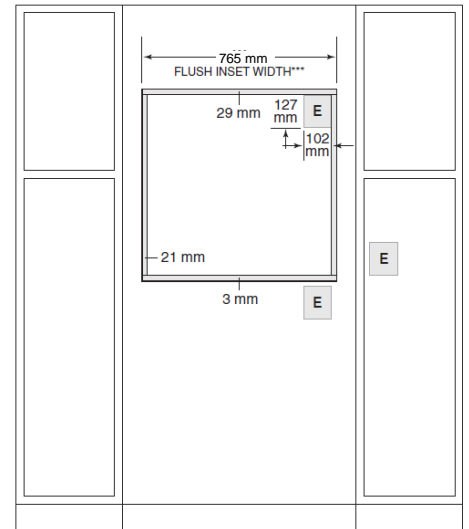
**FLUSH INSTALLATION**



TOP VIEW



SIDE VIEW



FRONT VIEW

NOTE: Location of electrical supply within opening may require additional cabinet depth.

\*25 mm minimum depth. Shaded areas will be visible and should be finished to match cabinetry.  
 \*\*25 mm for contemporary models  
 \*\*\*Dimension provides minimum reveals.

NOTE: Location of electrical supply within opening may require additional cabinet depth.