

ICBCSO30TM/S/TH



## FEATURES

Larger than similar units, can make multiple dishes at once

10 cooking modes make meals easy

Easy-access water tank provides 90 minutes of steam cooking

Installs flush with cabinetry or integrated into your kitchen design

Gourmet mode adjusts time, temperature, humidity for perfect results

Rigorously tested in our U.S. manufacturing facilities for decades of use

Exceptional support from our Customer Care team

Larger than similar units, can make multiple dishes at once

Steam mode captures nutrition, flavor and color

Reheat mode rehydrates leftovers flavorfully

Auto Steam Bake mode for bagels, breads, pastries

Convection mode for consistent results and beautiful browning

Convection Humid mode seals in moisture for juicy results

Convection Steam mode for foods tender inside, crisped outside

Slow Roast mode cooks dinner while you're away

Recipes mode cooks from collection of built-in recipes

"Keep Warm" mode

Program in when you want your dish to be ready

Temperature probe lets you know when it's done

Two pans, four rack positions

## ACCESSORIES

Descaling Solution

Full Extension Rack Guides Oven Rack

Perforated Pan

Porcelain Baking Sheet

Solid Pan

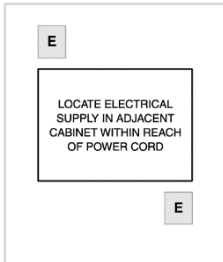
Accessories available through an authorized dealer.  
For local dealer information, visit [subzerowolf.com.hk](http://subzerowolf.com.hk).



**PRODUCT SPECIFICATIONS**

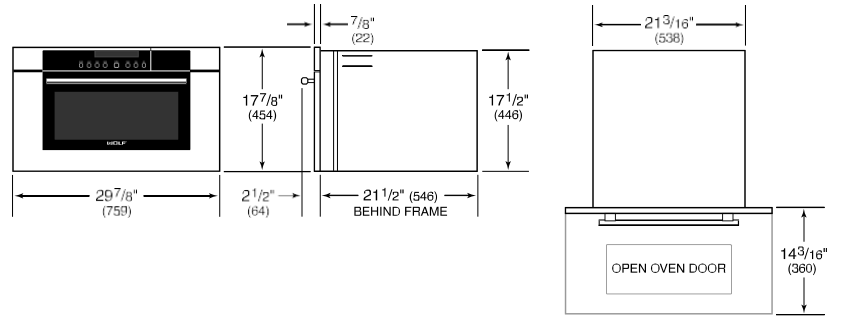
Model	ICBCSO30TM/S/TH
Dimensions	759 mm W x 454 mm H x 546 mm D
Interior Dimensions	454 mm W x 279 mm H x 400 mm D
Capacity	51 L
Door Clearance	360 mm
Weight	36 kg
Electrical Supply	220-240 VAC; 50 Hz
Electrical Service	3.7 kW

**ELECTRICAL**

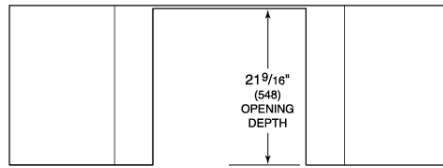


**NOTE:** Dimensions in parenthesis are in millimeters unless otherwise specified

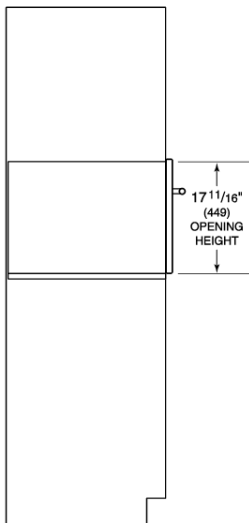
**DIMENSIONS**



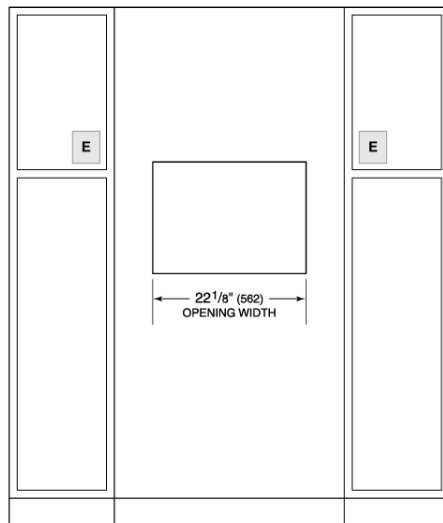
**STANDARD INSTALLATION**



TOP VIEW



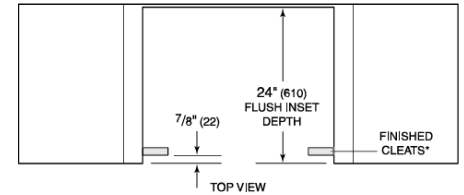
SIDE VIEW



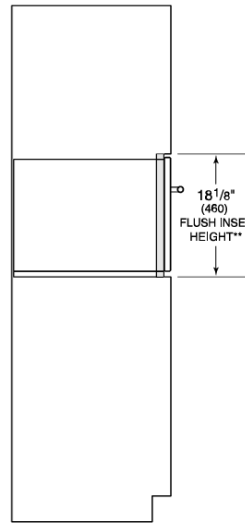
FRONT VIEW

Electrical supply must be located in adjacent cabinet within 3" (0.9 m) of opening

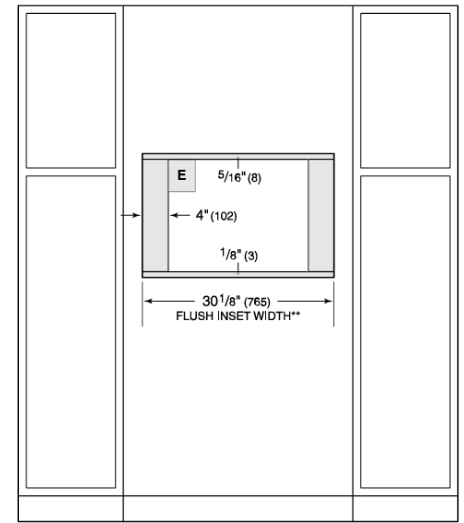
**FLUSH INSTALLATION**



TOP VIEW



SIDE VIEW



FRONT VIEW

\*Will be visible and should be finished to match cabinetry.  
\*\*Dimension provides minimum reveals.